

8 - Naming

Student version

**Dr Leonardo Mostarda,
School of Science and Technology,
Camerino University, Italy**
Version 1.0, 10 Mar 2013

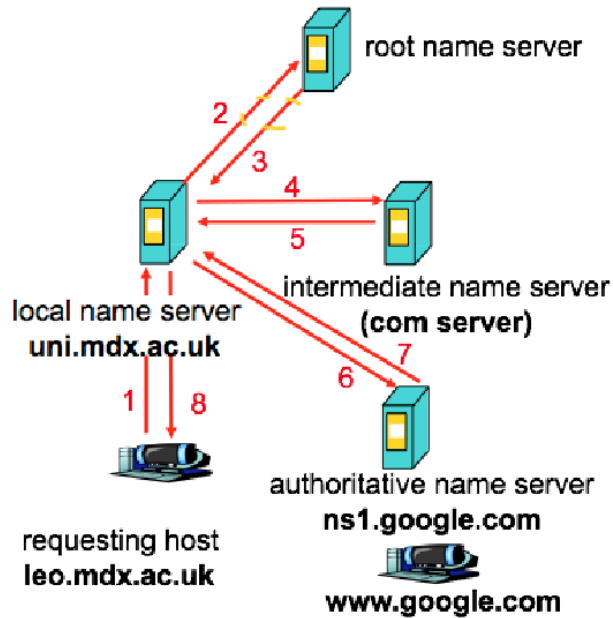


Figure 1: DNS query

Question 1

Describe the Home-Based Approach. What is its main drawback?

Question 2

Consider the DNS query shown in Figure 1 . State what kind of resolution it uses, (recursive or iterative), and explain why? Consider each step from 1-8 and explain the steps taken to resolve www.google.com to its IP address.

Question 3

Consider the DNS query shown in Figure 2 . State what kind of resolution it uses, (recursive or iterative), and explain why? Consider each step from 1-8 and explain the steps taken to resolve www.google.com to its IP address.

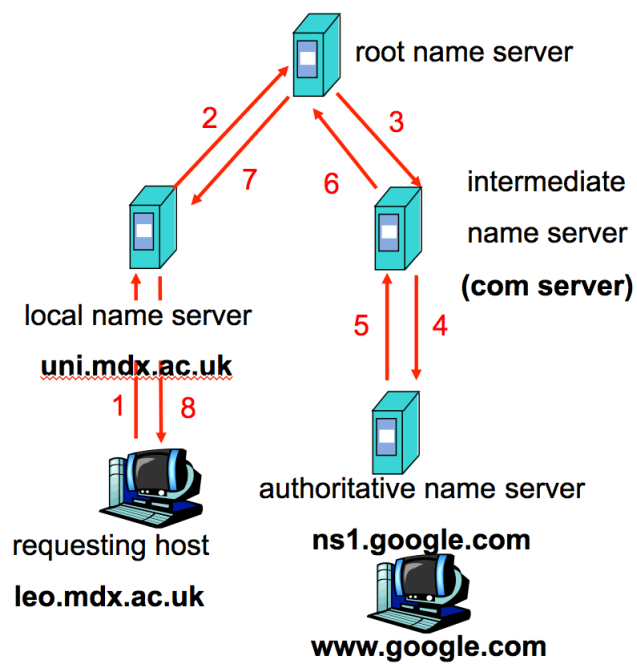


Figure 2: DNS query